



少數民族服裝與服飾傳承與創新資源庫

THE LIBRARY OF INHERITANCE AND INNOVATION OF MINORITY CLOTHES



# 土家族服饰结构制图 Tujiazu Apparel Drafting

男上衣（口袋、门襟、领）结构制图

Garment drafting of men's top  
(pocket, placket and collar)



## 土家族男上衣（口袋、门襟、领）结构制图 Garment drafting of men's top (pocket, placket and collar)

### 学习目标 Learning Objectives

- 1.掌握土家族男上衣（口袋、门襟、领）结构制图步骤、原理与方法；  
1. Master the garment drafting **steps, principles and methods** of Tujiazu men's top (pockets, placket and collar);
- 2.具备思考问题与解决问题的能力，能独立进行土家族男上衣结构设计。  
2. Have the ability to think and solve problems, and can independently **design the Tujiazu men's coat structure.**

### 重点与难点 Key and Difficult Points

**重点：**土家族男上衣（口袋、门襟、领）结构制图；

**Key Points:** structural drafting of Tujia men's jackets (pockets, placket and collar);

**难点：**对土家族男上衣门襟和领的结构理解。

**Difficult Points:** understand the structure of Tujia men's jacket placket and collar.

### 一、款式特点

#### 1. Style Features

### 二、规格设计

#### 2. Specification

### 三、男上衣（衣身）结构制图

#### 3. Garment drafting of men's top (pocket, placket and collar)

### 四、课后小结

#### 4. After-class Summary

### 五、任务及要求

#### 5. Tasks & Requirements.



## 一、款式特点 Style Features

(1) 领型：中式立领。

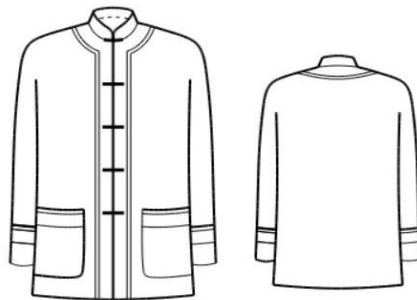
Collar type: mandarin collar.

(2) 衣身：前中对开门襟装盘扣，花边装饰连至后片。

Body piece: The center front placket is fitted with frog, and the lace trimmings is attached to the back piece.

(3) 袖子：连肩袖，袖口装有花边，两个贴袋。

Sleeves: raglan sleeves with lace at the cuffs and two patch pockets.



土家族男上衣款式图  
Tujiazu men's top working sketch



土家族服饰  
Tujiazu apparel



## 二、规格设计 Specification

型号 Model	衣长 Length	胸围 Chest Circumference	肩袖长 Sleeve Length from Shoulder	领围 Collar Opening	袖口 Cuff
170/88A	76	116	83	42	18.5

- 1、衣长：由肩颈点量至臀围下5厘米左右。

Length: Measured from the H.P.S. to about 5cm below the hip circumference.

- 2、胸围：此款属较宽松款，胸围的放松量设为28m。

Chest Circumference: this style is relatively loose, and the bust is set to 28 cm.

- 3、肩宽：肩宽是连着袖子的，基本肩宽规格45CM。

Shoulder Width: The shoulder width is connected with the sleeves. The basic shoulder width is 45cm.

- 4、领围：基本领围规格，42CM。

Collar Opening: basic collar opening specification: 42cm.



### 三、男上衣 (口袋、门襟、领) 结构制图 Drafting of men's top (pocket, placket and collar)

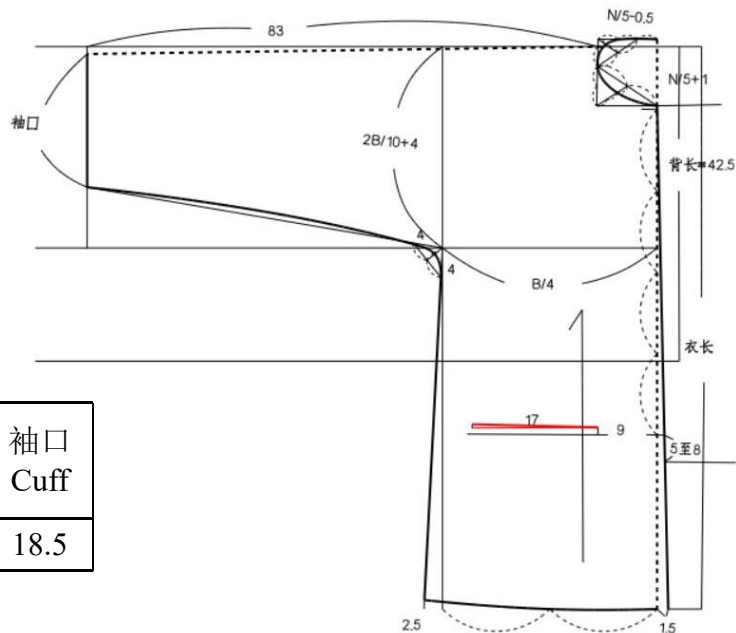
#### 步骤一:

绘制口袋位, 平行最底端的扣眼位。

#### Step 1:

Draw the pocket position, parallel to the buttonhole position at the bottom.

型号 Model	衣长 Length	胸围 Chest Circumference	肩袖长 Sleeve Length from Shoulder	领围 Collar Opening	袖口 Cuff
170/88A	76	116	83	42	18.5





### 三、男上衣 (口袋、门襟、领) 结构制图 Drafting of men's top (pocket, placket and collar)

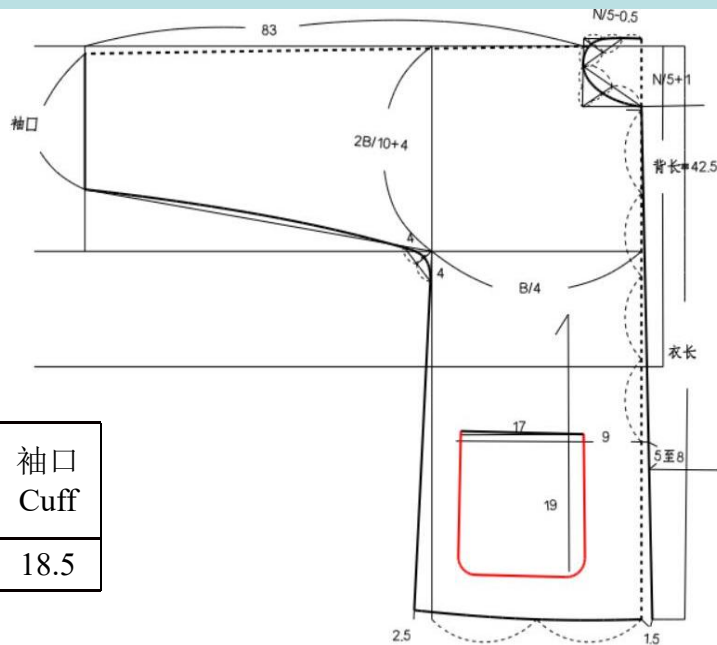
#### 步骤二:

绘制口袋, 袋口17厘米, 袋长19厘米。

#### Step 2:

Draw a pocket bag with an opening of 17cm and a bag length of 19cm.

型号 Model	衣长 Length	胸围 Chest Circumference	肩袖长 Sleeve Length from Shoulder	领围 Collar Opening	袖口 Cuff
170/88A	76	116	83	42	18.5





### 三、男上衣 (口袋、门襟、领) 结构制图 Drafting of men's top (pocket, placket and collar)

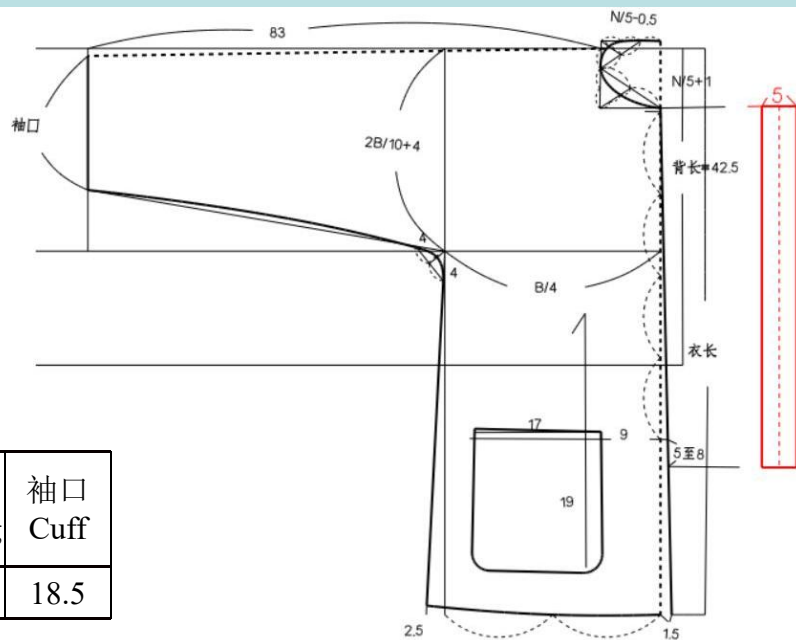
#### 步骤三:

绘制前暗里襟, 宽5~6厘米, 长为第一粒扣至最末端扣位加长5~6厘米。

#### Step 3:

Draw the French front for 5-6cm width and 5-6cm length from the first button to the end button.

型号 Model	衣长 Length	胸围 Chest Circumference	肩袖长 Sleeve Length from Shoulder	领围 Collar Opening	袖口 Cuff
170/88A	76	116	83	42	18.5





### 三、男上衣（口袋、门襟、领）结构制图 Drafting of men's top (pocket, placket and collar)

#### 步骤四:

绘制领子，先绘制一条直线为前领弧长加后领弧长。

#### Step 4:

To draw the collar, first draw a straight equal to the arc length of the front collar plus the back collar.

型号 Model	衣长 Length	胸围 Chest Circumference	肩袖长 Sleeve Length from Shoulder	领围 Collar Opening	袖口 Cuff
170/88A	76	116	83	42	18.5



Front neckline arc + Back neckline arc





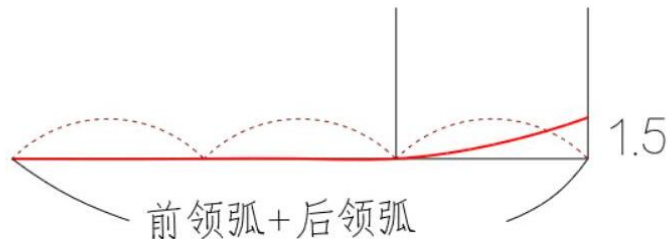
### 三、男上衣 (口袋、门襟、领) 结构制图 Drafting of men's top (pocket, placket and collar)

#### 步骤五:

领的前端起翘1.5厘米。

#### Step 5:

The front end of the collar is raised 1.5 cm.



Front neckline arc + Back neckline arc

型号 Model	衣长 Length	胸围 Chest Circumference	肩袖长 Sleeve Length from Shoulder	领围 Collar Opening	袖口 Cuff
170/88A	76	116	83	42	18.5



### 三、男上衣 (口袋、门襟、领) 结构制图

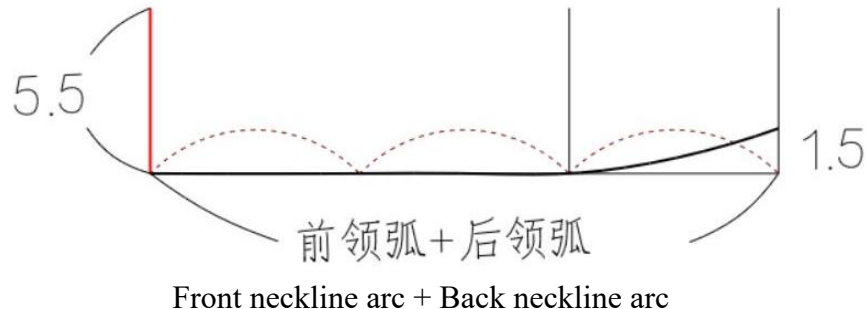
#### Drafting of men's top (pocket, placket and collar)

##### 步骤六:

领高: 5~5.5厘米。

##### Step 6:

Collar height: 5 ~ 5.5cm.



型号 Model	衣长 Length	胸围 Chest Circumference	肩袖长 Sleeve Length from Shoulder	领围 Collar Opening	袖口 Cuff
170/88A	76	116	83	42	18.5



### 三、男上衣 (口袋、门襟、领) 结构制图 Drafting of men's top (pocket, placket and collar)

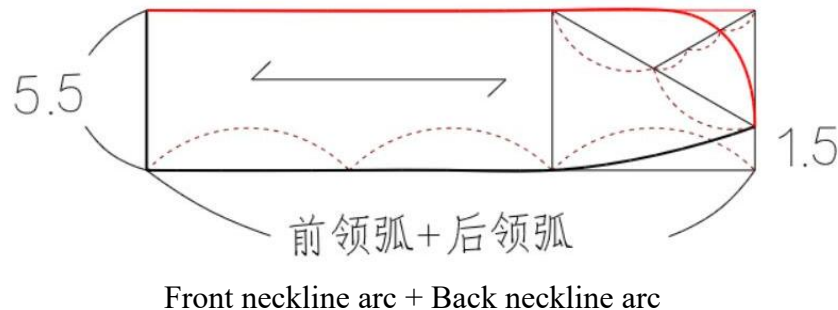
#### 步骤七:

画出领子上口线，完成领子绘制。

#### Step 7:

Draw the top line of the collar and finish the collar drawing.

型号 Model	衣长 Length	胸围 Chest Circumference	肩袖长 Sleeve Length from Shoulder	领围 Collar Opening	袖口 Cuff
170/88A	76	116	83	42	18.5





### 三、男上衣 (口袋、门襟、领) 结构制图

#### Drafting of men's top (pocket, placket and collar)

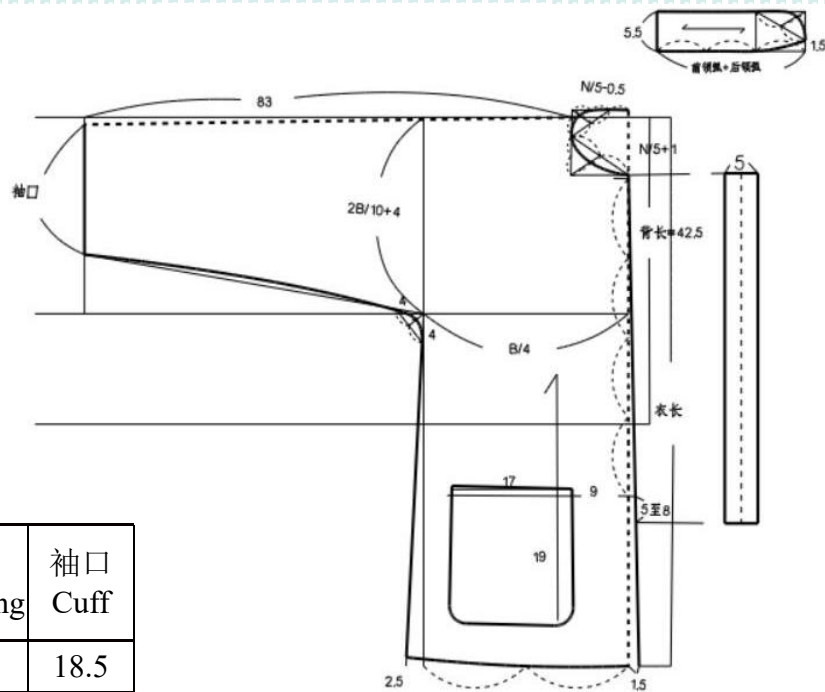
## 步骤八:

男上衣 完成图。

### Step 8:

This is the complete picture of the men's coat.

型号 Model	衣长 Length	胸围 Chest Circumference	肩袖长 Sleeve Length from Shoulder	领围 Collar Opening	袖口 Cuff
170/88A	76	116	83	42	18.5





## 四、课后小结 After-class Summary



本次课以具体的土家族男上衣款式为例，主要讲解了男上衣衣身的款式特点、规格设计和结构制图；

In this lesson, we takes the specific Tujiazu men's top style as an example, mainly explaining the style features, specification design and garment drafting of men's top (pocket, placket and collar).

**重点掌握男上衣的衣身结构制图步骤与方法。**

**Please focus on mastering the garment drafting steps and methods of men's (pockets, placket and collar).**



## 五、实训项目任务及要求 Training Tasks&Requirements

### 1、实训任务 Training Tasks:

绘制比例1: 1土家族男上衣（口袋、门襟、领）的结构图。

Draw the structural image of Tujiazu men's coat (pocket, placket and collar) at a scale of 1:1.

### 2、实训要求 Training Requirements:

1.规格尺寸设定合理；

Reasonable specification and size setting;

2.制图符合设计造型要求、线条流畅。

The drafting meets the design modeling requirements and the lines are smooth.