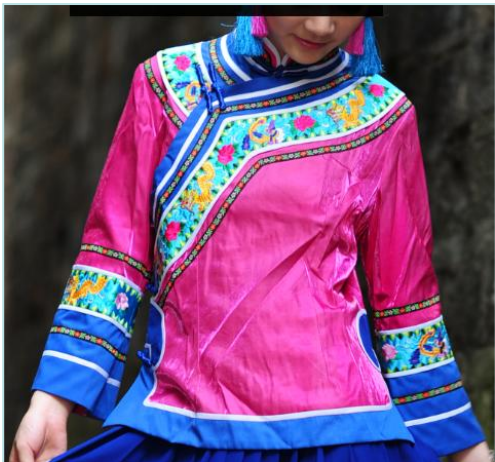




少數民族服裝與服飾傳承與創新資源庫

THE LIBRARY OF INHERITANCE AND INNOVATION OF MINORITY CLOTHES



土家族服饰结构制图

Tujiazu Apparel Drafting

女上衣后片结构制图
Women's top back garment
piece drafting



土家族女上衣结构制图 (后片)

Tujiazu women's top garment drafting (back garment pieces)

学习目标 Learning objectives:

1. 掌握土家族女上衣结构制图步骤、原理与方法;
1. Master the **steps, principles and methods** of top garment drafting
2. 具备思考问题与解决问题的能力, 能独立进行土家族女上衣结构设计。
2. Have the ability to think and solve problems, and can independently design the structure of **Tujiazu women's top garment**.

重点与难点 Key and Difficult Points:

重点: 掌握土家族女上衣后片结构制图步骤、原理与方法

Key points: Master the steps, principles and methods of Women's top back garment piece drafting

难点: 土家族女上衣后片结构制图。

Difficult Points: Women's top back garment piece drafting.

一、款式特点

1. Style Features

二、规格设计

2. Specification

三、后片结构制图

3. Drafting of the back piece

四、课后小结

4. After-class Summary

五、任务及要求

5. Tasks & Requirements



一、款式特点

1.Style features

- (1) 领型：中式立领，领口包边。

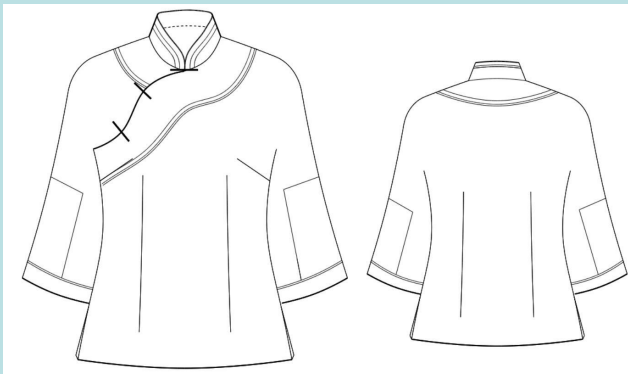
Collar type: mandarin collar with binding collar

- (2) 袖型：连肩袖，袖口微喇，袖口包边。

Sleeve style: raglan sleeves with trumpet type cuff and binding cuff

- (3) 衣身：前偏门襟，向右斜开至右侧下摆，两侧开叉，平底摆包边，腰节前后分别收腰节省，前片收有腋下省，领和斜门襟都包边装饰。

Body piece: the front placket slanting to the right hem; with slits on both sides, flat bottom hem with binding edge; waist section at the front and back disposed respectively to fit the body shape; underarm section at the front piece disposed too; collar and slanted placket decorated with binding edge.



土家族女上衣款式图
Tujiazu women's top working sketch





二、规格设计 2. Specification

号型 Model	衣长 Length	胸围 Chest Circumference	肩宽 Shoulder Breadth	领围 Collar Opening	袖长 Sleeve Length	袖口 Cuff
160/84A	58	92	38	39	55	18

1、衣长：主要与款式有关，由肩颈点量至臀围线处。

1. Length: varying in different styles, measured from the shoulder-neck point to the hipline.

2、胸围：此款属较合体款，胸围的放松量设为8-15cm。

2. Chest Width: this style suits well and the chest width measures from 8 to 15 cm.

3、肩宽：肩宽与人体的肩宽有密切关系，一般以净肩宽加0~1cm。

3. Shoulder Breadth: since the shoulder breadth varies for different individuals, 0-1 cm is added to the shoulder breadth.

4、领围：在基本领围基础上，围量脖颈一周，加放2~3cm。

4. Collar Opening: on the basis of the basic collar circumference, measure around the neck for a circle and add 2~3cm to the collar opening.

5、袖长：可按0.3号+ (3~6) 。

5. Sleeve Length: + (3~6) according to number 0.3



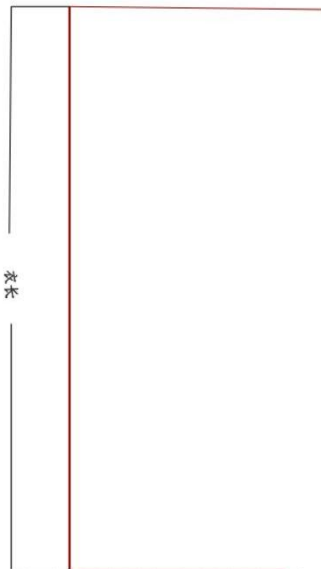
三、后片结构制图 3. Drafting of the back piece

号型 Model	衣长 Length	胸围 Chest Circumference	肩宽 Shoulder Breadth	领围 Collar Opening	袖长 Sleeve Length	袖口 Cuff
160/84A	58	92	38	39	55	18

步骤一:

绘制衣长58厘米。

Step 1: Draw the length of 58 cm.





三、后片结构制图

3. Drafting of the back piece

号型 Model	衣长 Length	胸围 Chest Circumference	肩宽 Shoulder Breadth	领围 Collar Opening	袖长 Sleeve Length	袖口 Cuff
160/84A	58	92	38	39	55	18

步骤二:

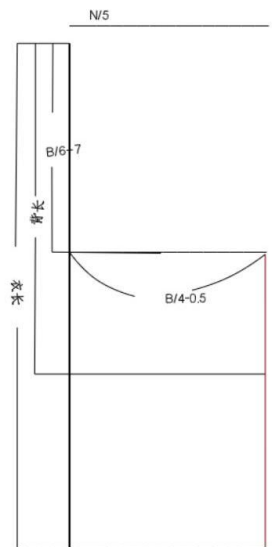
胸围线 (袖窿深) : $B/6+7\sim 8$ 厘米。

后胸围大: $B/4+0.5$ 厘米。

Step 2:

Chest width line (armhole depth line): $B/6 + 7\sim 8$ cm.

The back chest width: $B/4+0.5$ cm.





三、后片结构制图

3. Drafting of the back piece

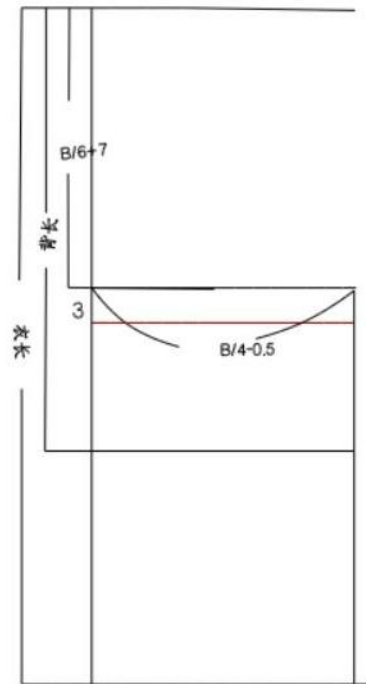
步骤三:

由于连袖胸围线需要在原胸围线基础上低落2~3厘米

Step 3:

The sleeve-chest line needs to be lowered by 2~3 cm based on the position of the original chest width line.

号型 Model	衣长 Length	胸围 Chest Circumference	肩宽 Shoulder Breadth	领围 Collar Opening	袖长 Sleeve Length	袖口 Cuff
160/84A	58	92	38	39	55	18





三、后片结构制图

3. Drafting of the back piece

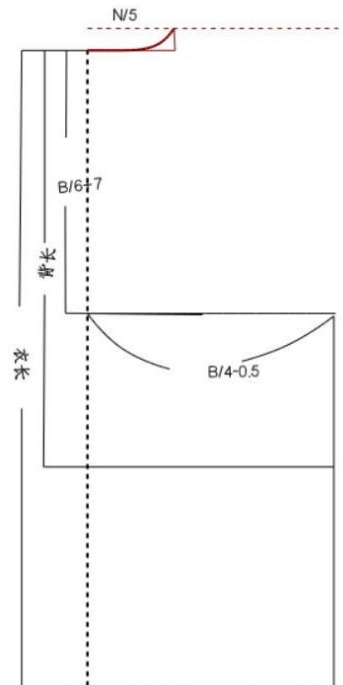
步骤四:

后直开领2厘米，后横开N/5，3等分画弧线。

Step 4:

The up to neck is 2cm, the neck edge to edge is N/5, and the curve is drawn in 3 equal parts.

号型 Model	衣长 Length	胸围 Chest Circumference	肩宽 Shoulder Breadth	领围 Collar Opening	袖长 Sleeve Length	袖口 Cuff
160/84A	58	92	38	39	55	18





三、后片结构制图

3. Drafting of the back piece

步骤五:

后肩斜角度为15: 5厘米,

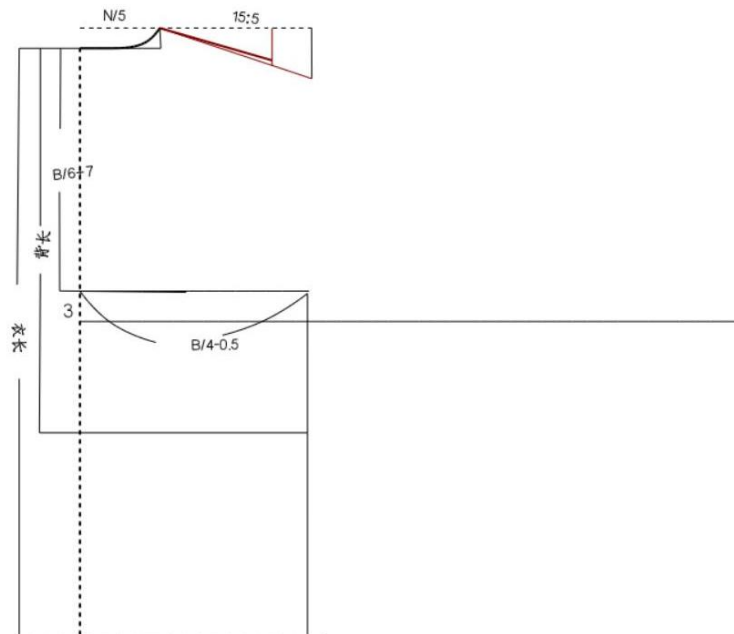
后肩宽为肩/2。

Step 5:

The oblique angle of back porch tilt is 15:5cm,

The back shoulder width is Shoulder/2.

号型 Model	衣长 Length	胸围 Chest Circumference	肩宽 Shoulder Breadth	领围 Collar Opening	袖长 Sleeve Length	袖口 Cuff
160/84A	58	92	38	39	55	18





三、后片结构制图

3. Drafting of the back piece

步骤六:

袖长为50, 袖肘处凹进来0.6~1厘米。

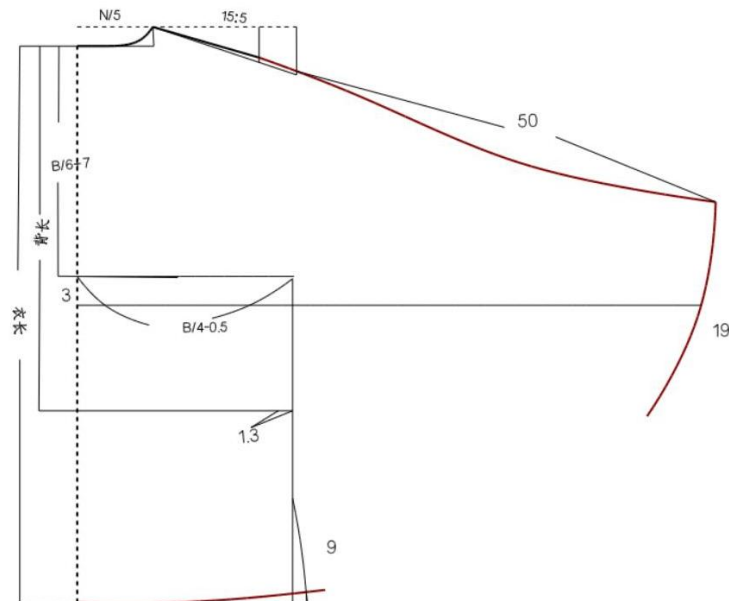
袖口: 18+1厘米。

Step 6:

The sleeve length is 50, and the sleeve elbow is recessed by 0.6~1cm.

Cuff: 18+1cm.

号型 Model	衣长 Length	胸围 Chest Circumference	肩宽 Shoulder Breadth	领围 Collar Opening	袖长 Sleeve Length	袖口 Cuff
160/84A	58	92	38	39	55	18





三、后片结构制图

3. Drafting of the back piece

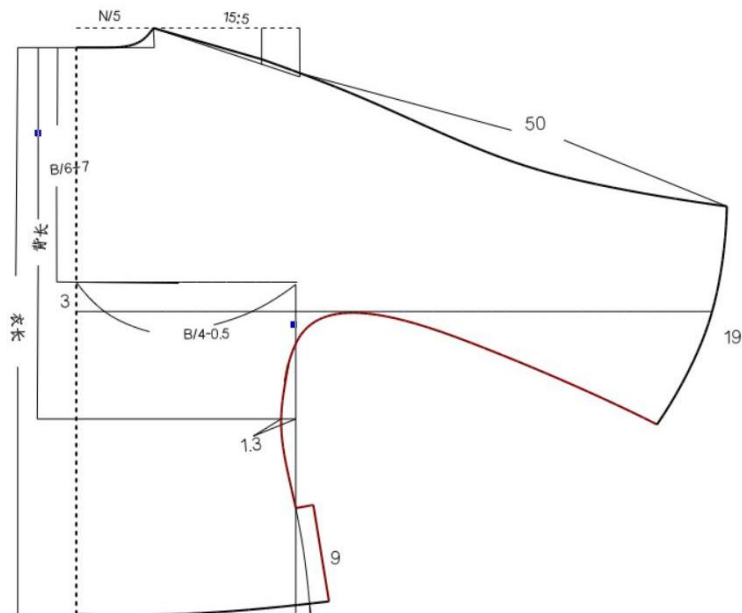
步骤七:

绘制袖底侧缝，腰节处收1.3厘米，下摆加放1.5厘米，画顺连至袖口。

Step 7:

Draw the sleeve bottom side seam; close 1.3cm at the waistline, and add 1.5cm at the hemline. Draw smoothly to the cuffs.

号型 Model	衣长 Length	胸围 Chest Circumference	肩宽 Shoulder Breadth	领围 Collar Opening	袖长 Sleeve Length	袖口 Cuff
160/84A	58	92	38	39	55	18





三、后片结构制图

3. Drafting of the back piece

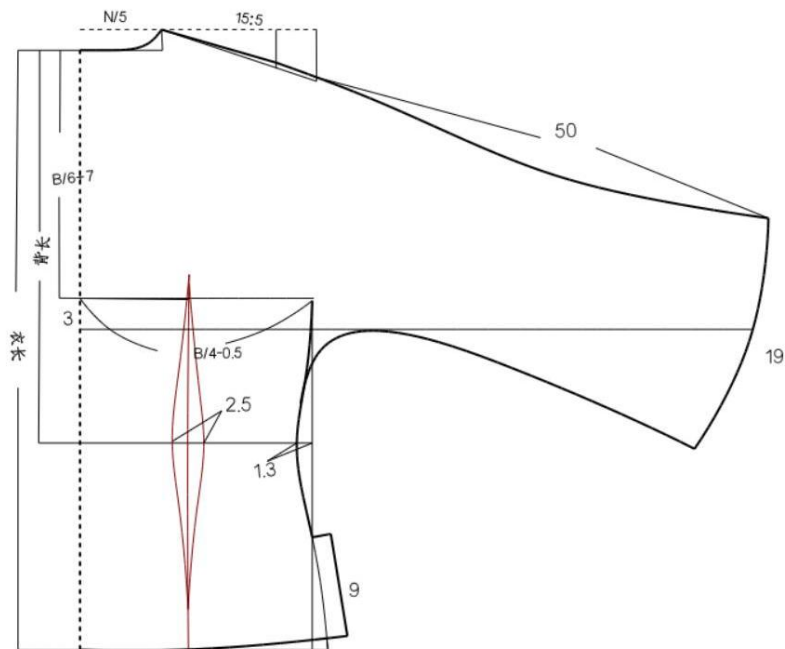
步骤八:

后腰节省大为2.5厘米，省尖上端胸围线往上2厘米，省尖下端离底边5厘米。

Step 8:

The back waist dart is 2.5 cm, the chest line of the upper end of the dart is 2 cm upward, and the lower end of the dart is 5 cm away from the bottom edge.

号型 Model	衣长 Length	胸围 Chest Circumference	肩宽 Shoulder Breadth	领围 Collar Opening	袖长 Sleeve Length	袖口 Cuff
160/84A	58	92	38	39	55	18





三、后片结构制图

3. Drafting of the back piece

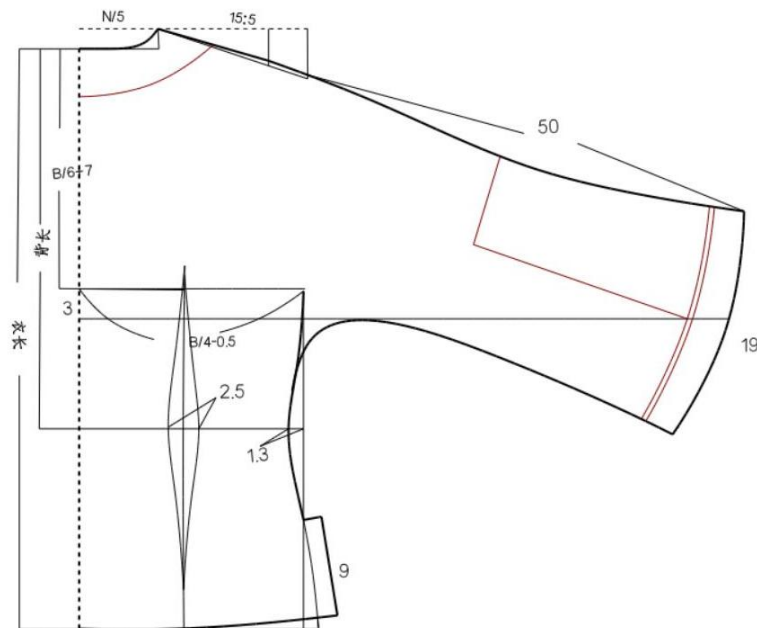
步骤九:

袖口外翻贴边宽3厘米，上面的绣花片和前片的相同。

Step 9:

The cuff is turned out and the welt is 3cm wide. The embroidered piece on it is the same as the front piece.

号型 Model	衣长 Length	胸围 Chest Circumference	肩宽 Shoulder Breadth	领围 Collar Opening	袖长 Sleeve Length	袖口 Cuff
160/84A	58	92	38	39	55	18





三、后片结构制图

3. Drafting of the back piece

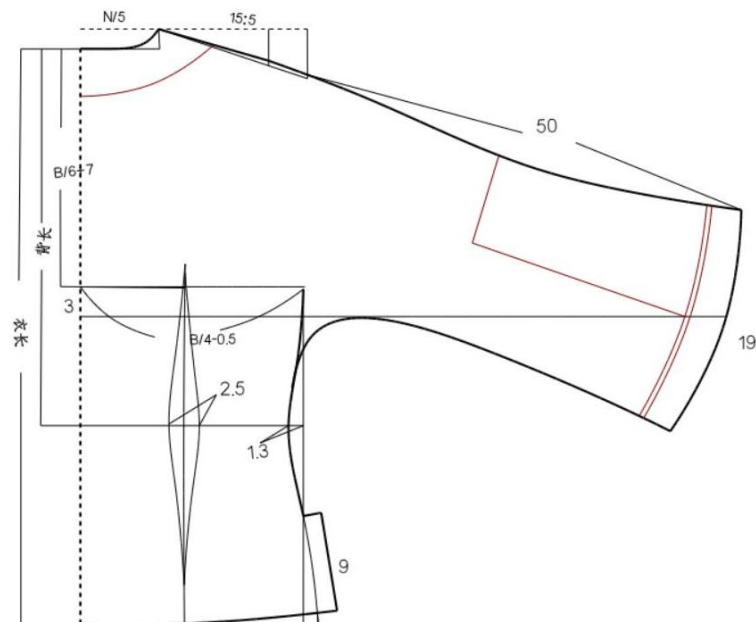
步骤十:

后片完成图。

Step 10:

This is the complete picture of the back piece.

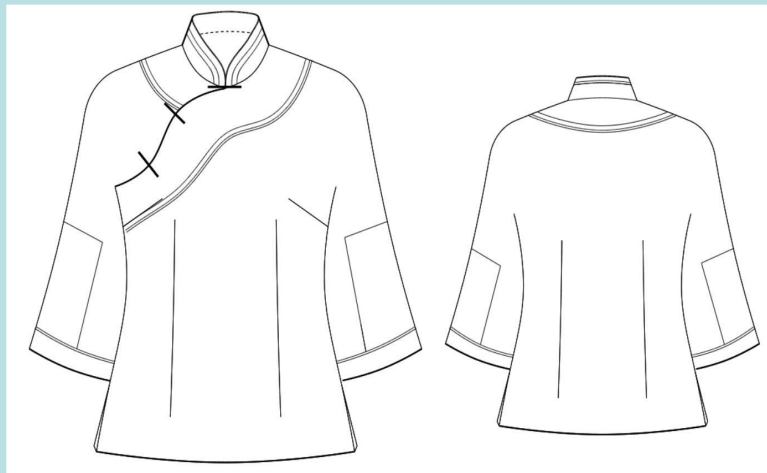
号型 Model	衣长 Length	胸围 Chest Circumference	肩宽 Shoulder Breadth	领围 Collar Opening	袖长 Sleeve Length	袖口 Cuff
160/84A	58	92	38	39	55	18





四、课后小结

4. After-class Summary



本次课以具体的土家族女上衣款式为例，主要讲解了女上衣的款式特点、规格设计和前片结构制图；

This lesson takes the specific Tujiazu women's top style as an example, mainly explaining the style features, specification and the back piece drafting.

重点掌握女上衣的前片结构制图步骤与方法。

Focus on mastering the drafting steps and methods of the back piece of women's top.



五、实训项目任务及要求

5. Tasks & Requirements

1、实训任务 Training tasks:

绘制比例1: 1土家族女上衣后片的结构图。

Draw the drafting of back piece of Tujiazu women's top at a scale of 1:1.

2、实训要求 Training requirements:

1.规格尺寸设定合理;

1. Reasonable specification and size setting;

2.制图符合设计造型要求、线条流畅。

2. The drafting meets the design modeling requirements and the lines are smooth.