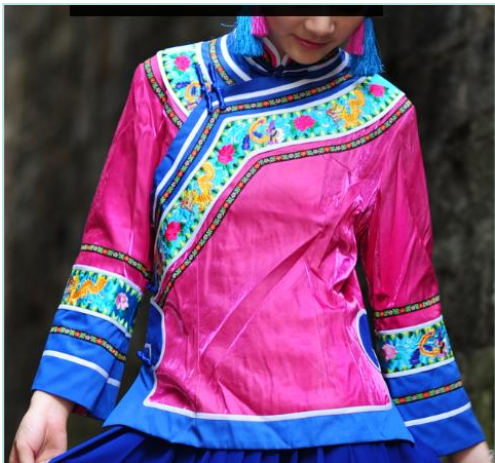




少數民族服裝與服飾傳承與創新資源庫

THE LIBRARY OF INHERITANCE AND INNOVATION OF MINORITY CLOTHES



土家族服饰结构制图

Tujiazu Apparel Drafting

女上衣前片结构制图

The front piece of women's top drafting



土家族女上衣结构制图 (前片) Tujiazu women's top drafting (front piece)

学习目标 Learning objectives

- 1.掌握土家族女上衣结构制图步骤、原理与方法;
1.Master the **steps, principles and methods** of Tujiazu women's top drafting.
- 2.具备思考问题与解决问题的能力, 能独立进行土家族女上衣结构设计。
2. Have the ability to think and solve problems, and can independently **design**

Tujiazu women's top

重点与难点 Key and Difficult Points

重点: 土家族女上衣前片结构制图原理与方法

Key points: Master the steps, principles and methods of Tujiazu women's top drafting.

难点: 土家族女上衣前片结构制图。

Difficult Points: the front piece of Tujiazu women's top drafting

一、款式特点 1. Style Features

二、规格设计 2. Specification

三、前片结构制图 3. Drafting of the front piece

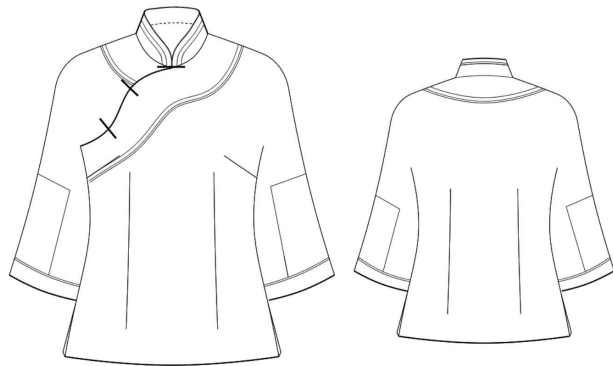
四、课后小结 4. After-class Summary

五、任务及要求 5. Tasks & Requirements



一、款式特点

1.Style features



(1) 领型：中式立领，领口包边。

Collar type: mandarin collar with binding collar

(2) 袖型：连肩袖，袖口微喇，袖口包边。

Sleeve style: raglan sleeves with trumpet type cuff and binding cuff

(3) 衣身：前偏门襟，向右斜开至右侧下摆，两侧开叉，平底摆包边，腰节前后分别收腰节省，前片收有腋下省，领和斜门襟都包边装饰。

Body piece: the front placket slanting to the right hem; with slits on both sides, flat bottom hem with binding edge; waist section at the front and back disposed respectively to fit the body shape; underarm section at the front piece disposed too; collar and slanted placket decorated with binding edge.

土家族女上衣款式图
Tujiazu women's top working sketch



土家族服饰
Tujiazu apparel



二、规格设计 2. Specification

号型 Model	衣长 Length	胸围 Chest circumference	肩宽 Shoulder Breadth	领围 Collar Opening	袖长 Sleeve Length	袖口 Cuff
160/84A	58	92	38	39	55	18

1、衣长：主要与款式有关，由肩颈点量至臀围线处。

1. Length: varying in different styles, measured from the shoulder-neck point to the hipline.

2、胸围：此款属较合体款，胸围的放松量设为8-15cm。

2. Chest Width: this style suits well and the chest width measures from 8 to 15 cm.

3、肩宽：肩宽与人体的肩宽有密切关系，一般以净肩宽加0~1cm。

3. Shoulder Breadth: since the shoulder breadth varies for different individuals, 0-1 cm is added to the shoulder breadth.

4、领围：在基本领围基础上，围量脖颈一周，加放2~3cm。

4. Collar Opening: on the basis of the basic collar circumference, measure around the neck for a circle and add 2~3cm to the collar opening.

5、袖长：可按0.3号+（3~6）。

5. Sleeve Length: + (3~6) according to number 0.3



三、前片结构制图

3. Drafting of the front piece

步骤一:

绘制衣长58厘米。

Step 1: Draw the length of 58 cm

号型 Model	衣长 Length	袖长 Sleeve Length	肩宽 Shoulder Breadth	胸围 Chest Circumference	领围 Collar Opening	袖口 Cuff
160/84A	58	50	38	92	40	18





三、前片结构制图

3. Drafting of the front piece

步骤二:

胸围线: $B/6+7\sim 8$ 厘米。

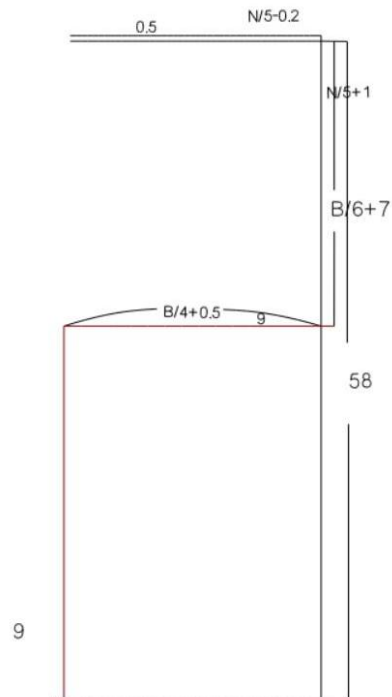
前胸围大: $B/4+0.5$ 厘米。

Step 2:

Chest width line: $B/6+7\sim 8$ cm

The front chest width: $B/4+0.5$ cm

号型 Model	衣长 Length	袖长 Sleeve Length	肩宽 Shoulder Breadth	胸围 Chest Circumference	领围 Collar Opening	袖口 Cuff
160/84A	58	50	38	92	40	18





三、前片结构制图

3. Drafting of the front piece

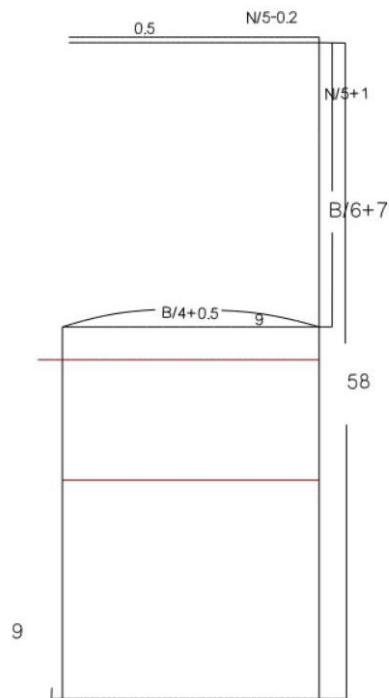
步骤三:

因为连袖要适当的宽松，胸围线需要在原胸围线基础上低落2~3厘米。

Step 3:

Since The sleeve should be loose properly chest. The chest line needs to be 2~3 cm lower the original chest line.

号型 Model	衣长 Length	袖长 Sleeve Length	肩宽 Shoulder Breadth	胸围 Chest Circumference	领围 Collar Opening	袖口 Cuff
160/84A	58	50	38	92	40	18





三、前片结构制图

3. Drafting of the front piece

步骤四:

直开领: $N/5+1$ 厘米;

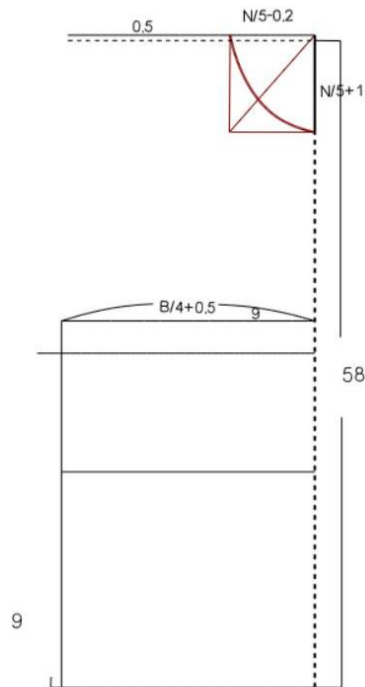
横开领: $N/5-0.2$ 厘米, 然后取 $1/3$ 画弧线。

Step 4:

up to neck: $N/5+1$ cm;

neck edge to edge: $N/5-0.2$ cm. Then draw an arc about one

号型 Model	衣长 Length	袖长 Sleeve Length	肩宽 Shoulder Breadth	胸围 Chest Circumference	领围 Collar Opening	袖口 Cuff
160/84A	58	50	38	92	40	18





三、前片结构制图

3. Drafting of the front piece

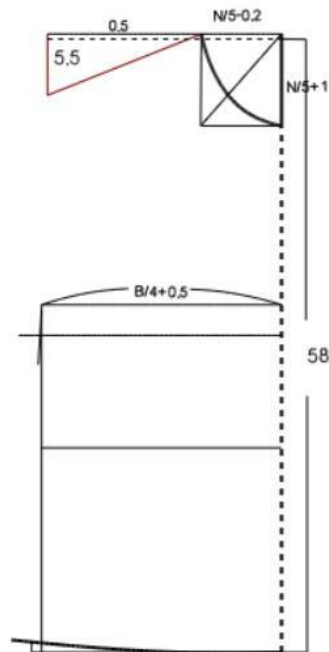
步骤五:

肩斜为15: 5.5厘米。

Step 5:

The shoulder slope is 15:5.5 cm

号型 Model	衣长 Length	袖长 Sleeve Length	肩宽 Shoulder Breadth	胸围 Chest Circumference	领围 Collar Opening	袖口 Cuff
160/84A	58	50	38	92	40	18





三、前片结构制图

3. Drafting of the front piece

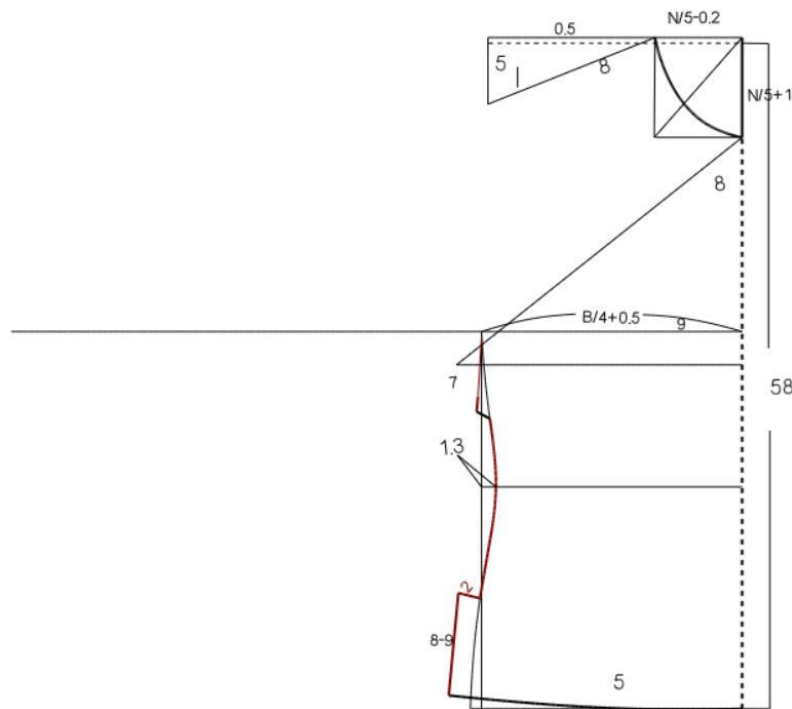
步骤六:

绘制侧缝，腰节收1.3厘米，下摆加放1.5厘米。

Step 6:

Draw side seam. Reduce the waist line by 1.3 cm and add 1.5 cm to hem line.

号型 Model	衣长 Length	袖长 Sleeve Length	肩宽 Shoulder Breadth	胸围 Chest Circumference	领围 Collar Opening	袖口 Cuff
160/84A	58	50	38	92	40	18





三、前片结构制图

3. Drafting of the front piece

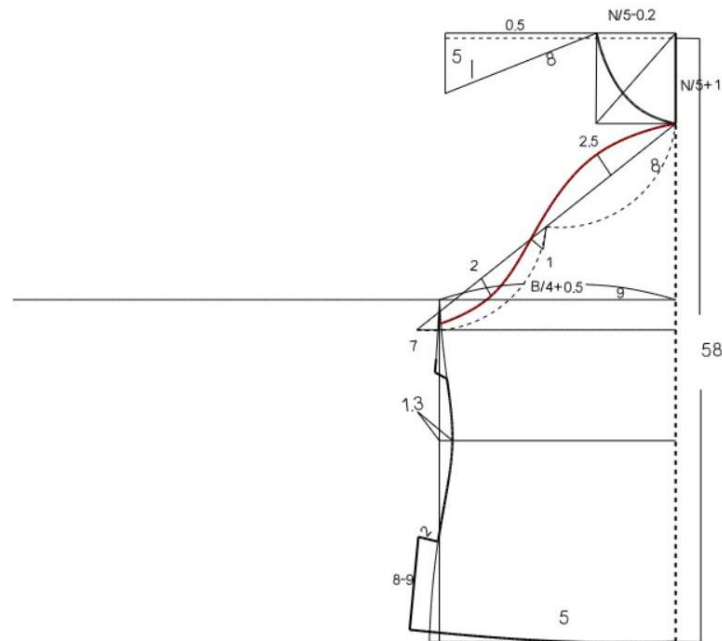
步骤七:

绘制前偏门襟，上端外弧2.5厘米，下端内弧2厘米。

Step 7:

Draw the front slanted placket. The upper outer arc is 2.5 cm and the bottom inner arc is 2 cm.

号型 Model	衣长 Length	袖长 Sleeve Length	肩宽 Shoulder Breadth	胸围 Chest Circumference	领围 Collar Opening	袖口 Cuff
160/84A	58	50	38	92	40	18





三、前片结构制图

3. Drafting of the front piece

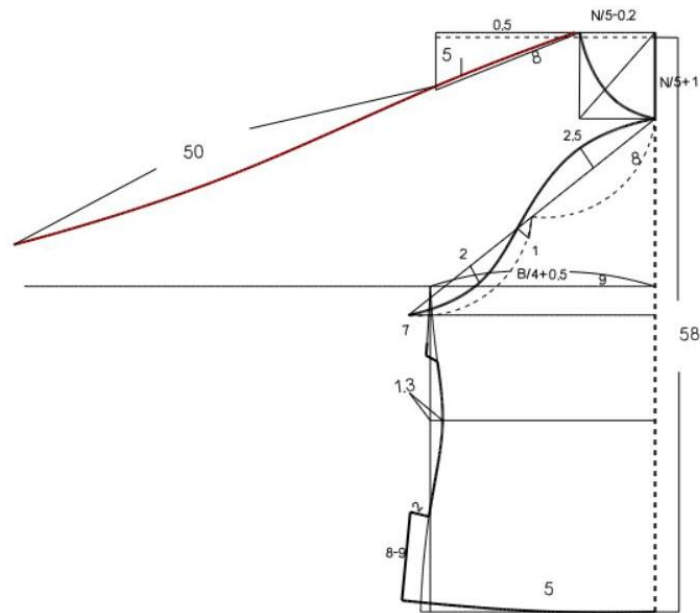
步骤八:

袖长从肩端点下50厘米, 中间适当凹进0.6厘米左右。

Step 8:

The position measured from the shoulder point to the sleeve length of 50 cm should be appropriately recessed into about 0.6 cm.

号型 Model	衣长 Length	袖长 Sleeve Length	肩宽 Shoulder Breadth	胸围 Chest Circumference	领围 Collar Opening	袖口 Cuff
160/84A	58	50	38	92	40	18





三、前片结构制图

3. Drafting of the front piece

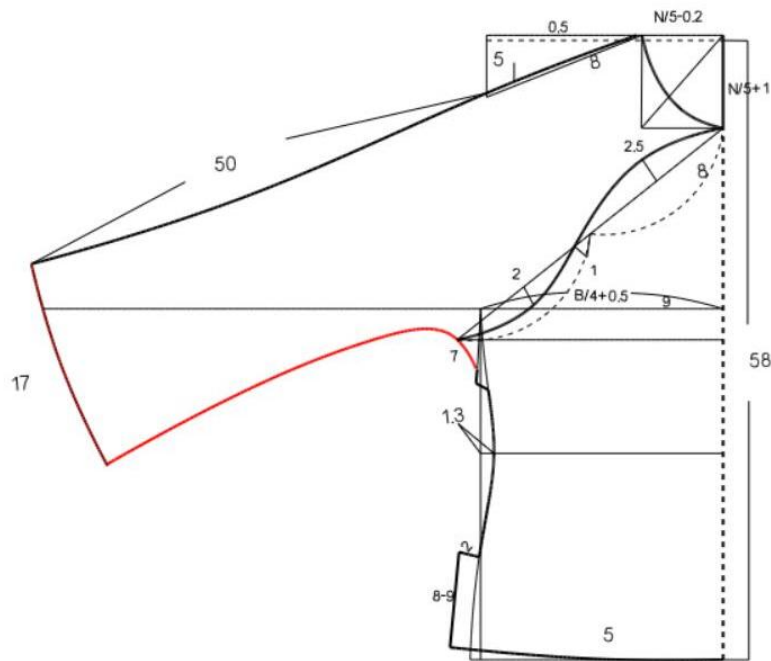
步骤九:

绘制袖口：袖口大减去1后为17厘米，画好袖下弧线。

Step 9:

Draw the cuff: the cuff is 17 cm after subtracting 1, and draw the arc under the sleeve.

号型 Model	衣长 Length	袖长 Sleeve Length	肩宽 Shoulder Breadth	胸围 Chest Circumference	领围 Collar Opening	袖口 Cuff
160/84A	58	50	38	92	40	18





三、前片结构制图

3. Drafting of the front piece

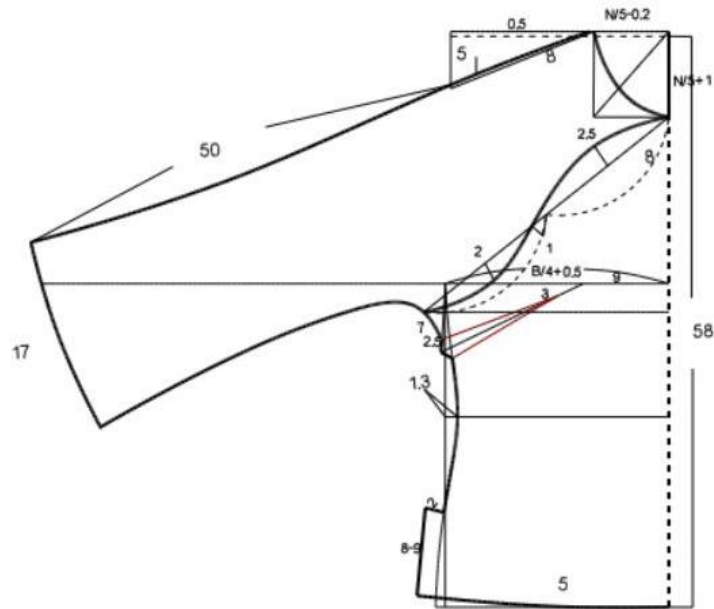
步骤十:

绘制腋下省，省大2.5厘米，省尖离胸围线3厘米。

Step 10:

Draw the underarm dart: the dart is 2.5 cm, and the dart beginning point is 3 cm away from the bust line.

号型 Model	衣长 Length	袖长 Sleeve Length	肩宽 Shoulder Breadth	胸围 Chest Circumference	领围 Collar Opening	袖口 Cuff
160/84A	58	50	38	92	40	18





三、前片结构制图

3. Drafting of the front piece

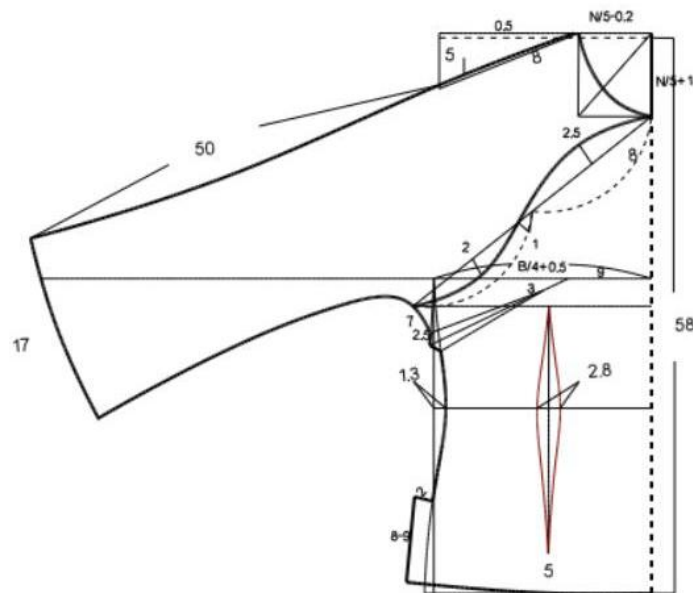
步骤十一:

绘制腰节省，省大2.8厘米，省尖离底边5厘米。

Step 11:

Draw the waist dart: the dart is 2.5 cm, and the dart beginning point is 5 cm away from bottom margin.

号型 Model	衣长 Length	袖长 Sleeve Length	肩宽 Shoulder Breadth	胸围 Chest Circumference	领围 Collar Opening	袖口 Cuff
160/84A	58	50	38	92	40	18





三、前片结构制图

3. Drafting of the front piece

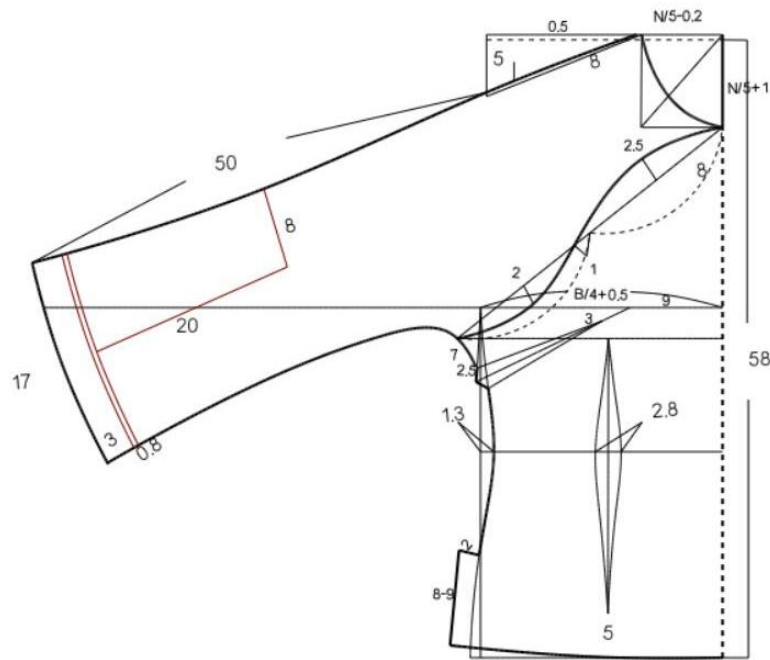
步骤十二:

前袖子装饰花边，袖口边的宽度为3厘米，袖子上的大绣花片宽8厘米，长20厘米。

Step 12:

The front sleeve is trimmed with laciness and the cuff width is 3 cm. The large embroidered piece on the sleeve is 8 cm wide and 20 cm long.

号型 Model	衣长 Length	袖长 Sleeve Length	肩宽 Shoulder Breadth	胸围 Chest Circumference	领围 Collar Opening	袖口 Cuff
160/84A	58	50	38	92	40	18





三、前片结构制图

3. Drafting of the front piece

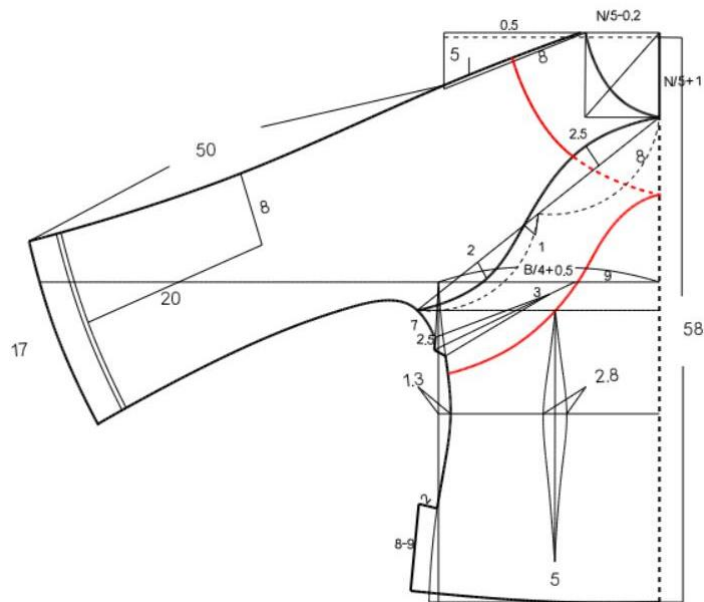
步骤十三:

前领窝与斜门襟的花边宽8厘米。

Step 13:

The front collar nest and the slanted placket is 8 cm wide.

号型 Model	衣长 Length	袖长 Sleeve Length	肩宽 Shoulder Breadth	胸围 Chest Circumference	领围 Collar Opening	袖口 Cuff
160/84A	58	50	38	92	40	18





三、前片结构制图

3. Drafting of the front piece

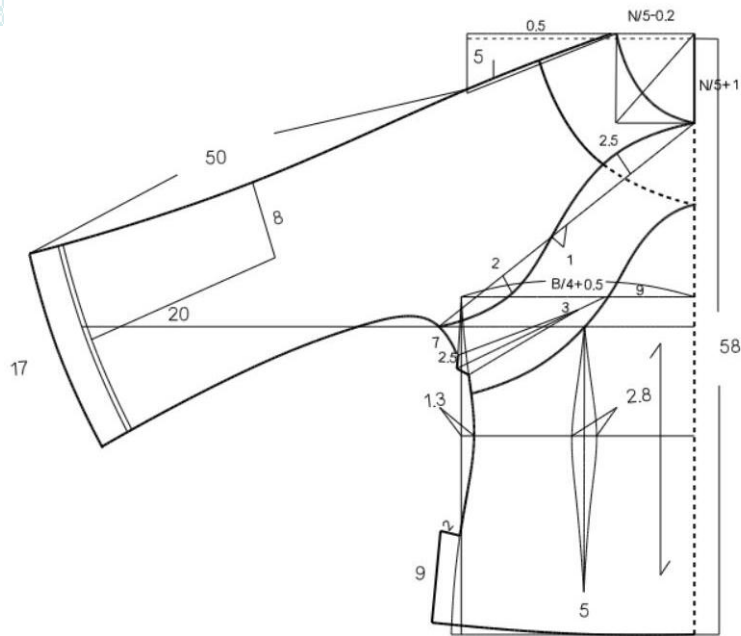
步骤十四:

前片完成图。

Step 14:

This is the complete picture of the front piece.

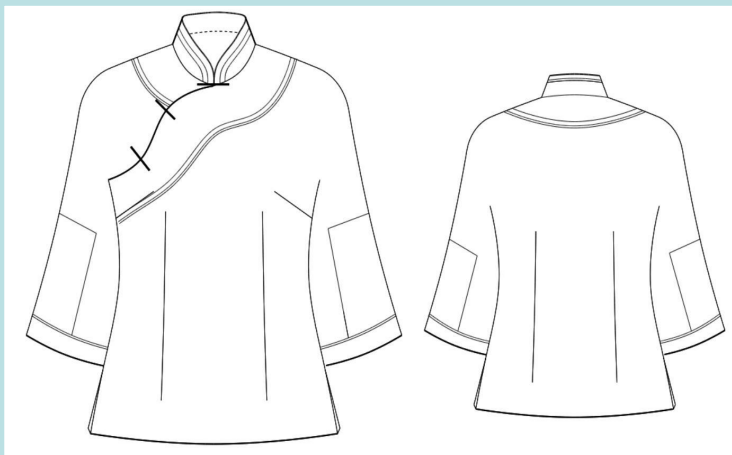
号型 Model	衣长 Length	袖长 Sleeve Length	肩宽 Shoulder Breadth	胸围 Chest Circumference	领围 Collar Opening	袖口 Cuff
160/84A	58	50	38	92	40	18





四、课后小结

4. After-class Summary



本次课以具体的土家族女上衣款式为例，主要讲解了女上衣的款式特点、规格设计和前片结构制图；

This lesson takes the specific Tu Jia Zu women's top style as an example, mainly explaining the style features, specification and the front piece drafting.

重点掌握女上衣的前片结构制图步骤与方法。

Focus on mastering the drafting steps and methods of the front piece of women's top.



五、实训项目任务及要求

5. Tasks & Requirements

1、实训任务 Training tasks:

绘制比例1：1 土家族女上衣前片的结构图。

Draw the drafting of front piece of Tujiazu women's top at a scale of 1:1.

2、实训要求 Training requirements:

1.规格尺寸设定合理；

1. Reasonable specification and size setting;

2.制图符合设计造型要求、线条流畅。

2. The drafting meets the design modeling requirements and the lines are smooth.